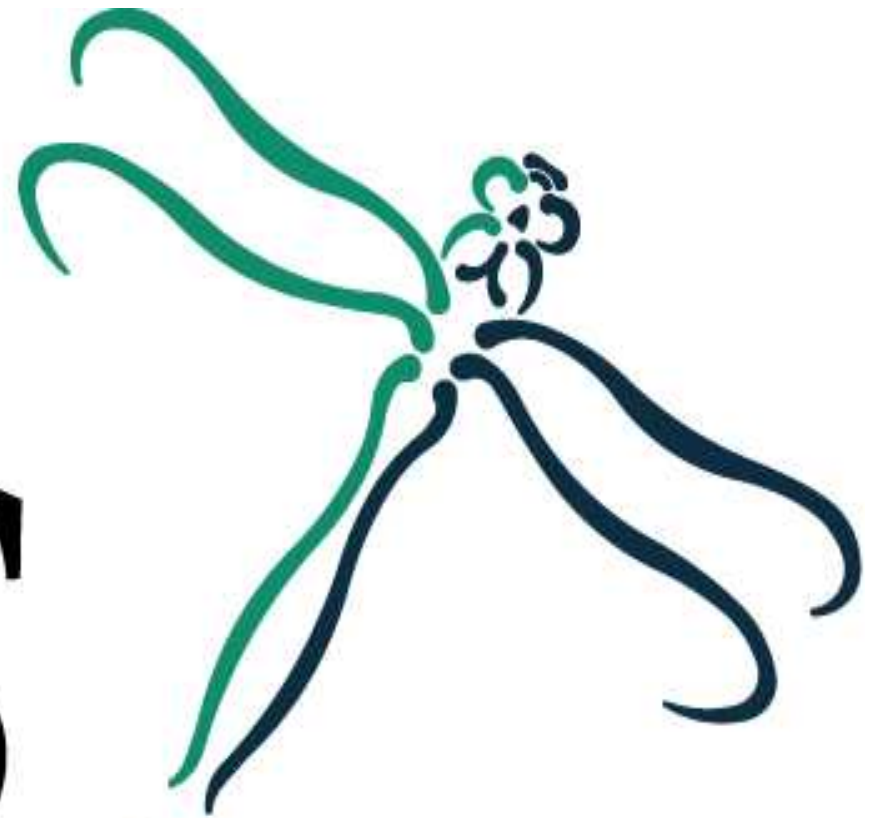


BDS



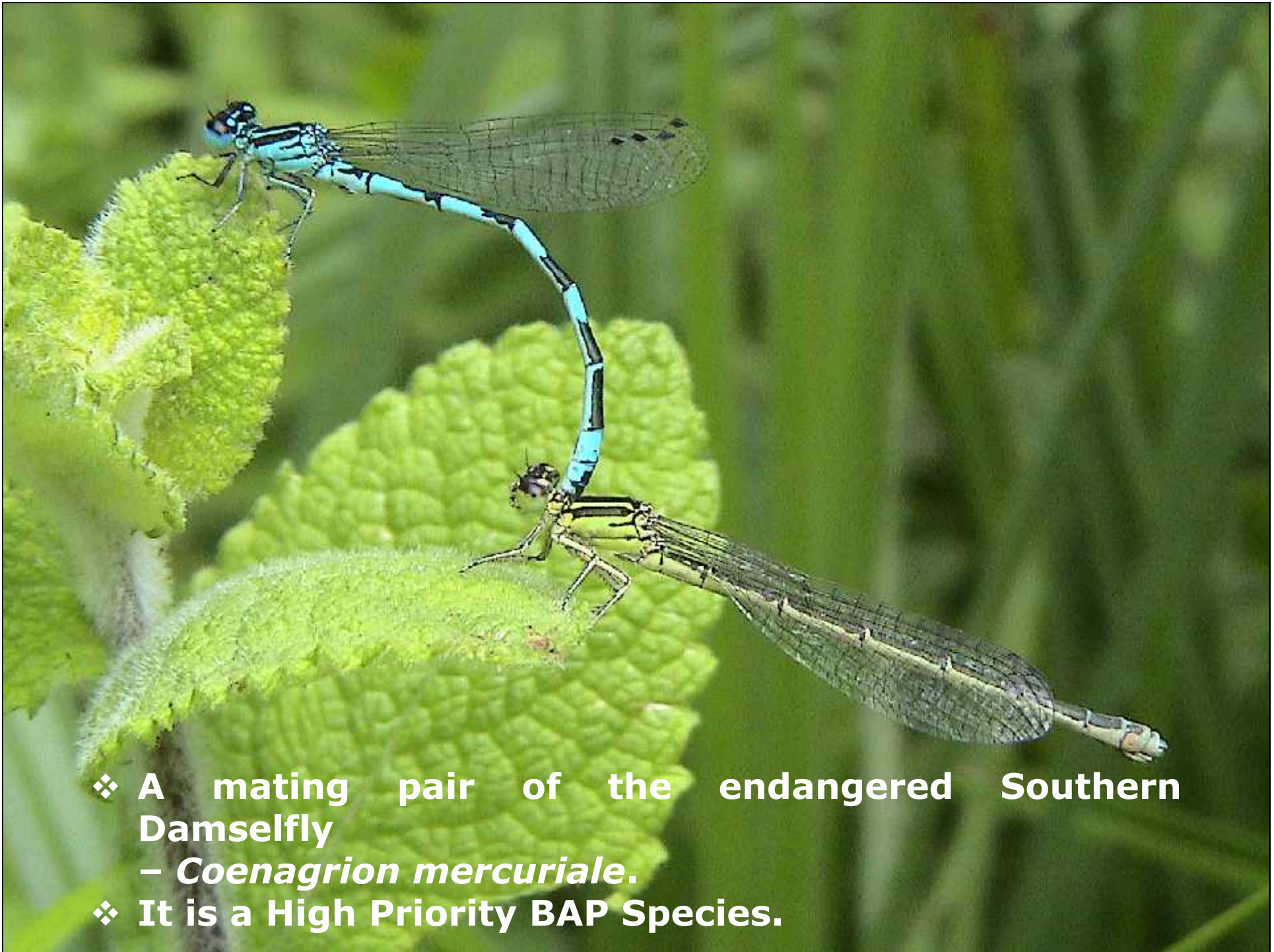
British Dragonfly Society



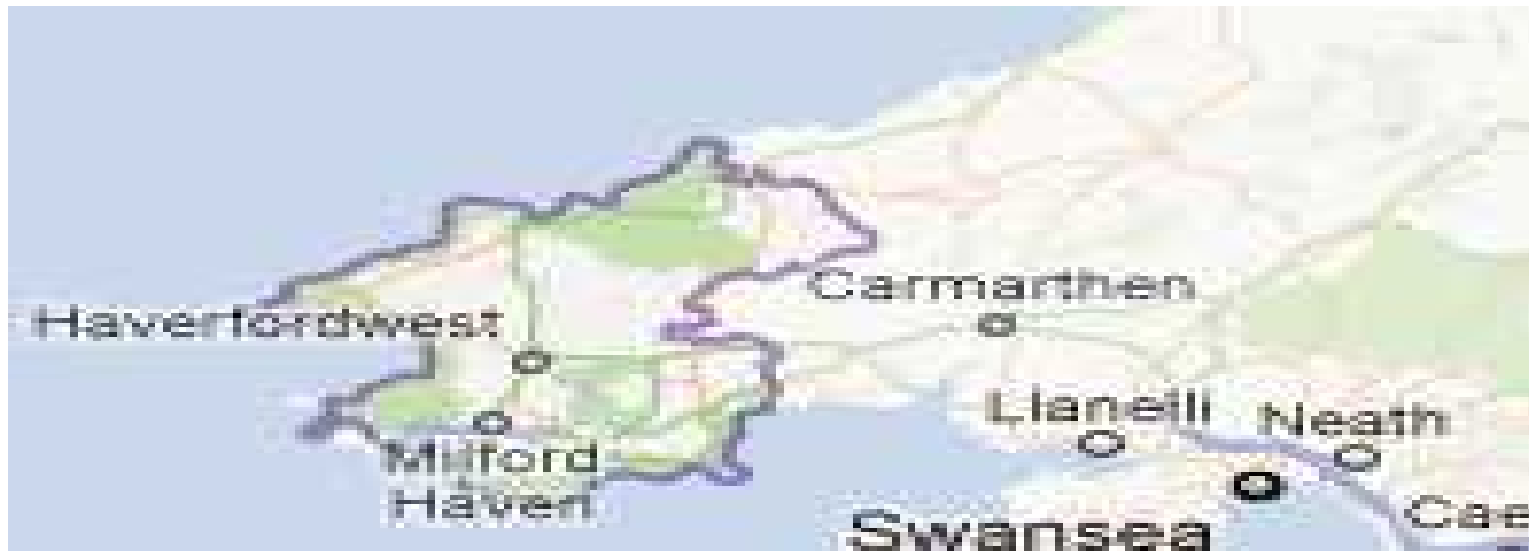
New Habitat Created for Damselfly Nymphs



**An exciting partnership between the British Dragonfly Society,
Pembrokeshire Coast National Park Authority , Countryside
Council for Wales & Environment Wales.**



- ❖ A mating pair of the endangered Southern Damselfly – *Coenagrion mercuriale*.
- ❖ It is a High Priority BAP Species.



It is found in Pembrokeshire, the Gower, Anglesey in Wales and Southern England – particularly Devon.



It's a rare insect we think partly due to its preferred habitat requirements and that it is a sun-loving, Mediterranean-climate species.



- ❖ The Southern Damselfly is about the length of a matchstick.
- ❖ Males are blue and black and the females are green and black.
- ❖ This can be confusing as there are seven blue and black damselflies found throughout Britain.

❖ However, Southern Damselfly are identified by looking at the markings just below its wings.





Here there is a marking similar to the astrological symbol for the planet Mercury.



The Southern Damselfly has specific habitat requirements.





Southern Damselfly Habitat.

- ❖ **Through a partnership project, with Environment Wales, Pembrokeshire Coast National Park & CCW, to conserve the Southern Damselfly new habitat has been created using a digger.**
- ❖ **The project is managed by the BDS and supervised by our volunteers.**
- ❖ **Through the partnership, the BDS's Conservation Officer – Claire Install & the Cokers, provided expert species knowledge and with Jon Hudson of CCW expert habitat management advice.**
- ❖ **The National Park who own and manage the site, assessed the suitability of the ground conditions for creating Southern Damselfly habitat.**

- ❖ **The digger created shallow streams leading from natural springs found on site and more habitat was created than originally envisaged.**
- ❖ **These improvements have re-graded the bank profile of ditches, improved accessibility for livestock and created shallow streams and pools.**
- ❖ **Two pools were also created on the site in 2005, so aquatic vegetation should colonise the new areas.**
- ❖ **Ponies graze the site as part of the habitat management.**
- ❖ **This partnership project ensures that the Southern Damselfly habitat created is optimal for this species and will be maintained by correct site management in the future.**

A grant from the Wales Biodiversity Steering Group would enable the partnership to create a pond at a degraded and hence former Southern Damselfly site in the north Preseli Hills.

A management plan for the Southern Damselfly in Pembrokeshire would recommend a series of measures to ensure the long-term conservation of the Southern Damselfly in Pembrokeshire – its UK stronghold.

A close-up photograph of a blue damselfly nymph perched on a light-colored twig. The nymph has a slender, segmented body with alternating light blue and dark blue bands. Its wings are transparent and folded over its back. The background is a soft-focus green, suggesting a natural habitat with reeds or grasses.

Thank You.

British Dragonfly Society

❖ **Claire Install – Conservation Officer**

❖ **Gary Roberts – Chief Executive**

www.british-dragonflies.org.uk